



# **Mount Erin College**

## **Year 7 2026**

# **Information Handbook**

**RESPECT  
RESPONSIBILITY  
RESILIENCE**

*Learning is our priority*

## WELCOME

At Mount Erin College we strive to empower all members of our community to achieve their personal best and develop as responsible and creative members of the community. We value:

**Respect-** By feeling or showing an understanding for your own or other's beliefs / rights / religions or environment.

**Responsibility-** By being dependable, making good choices, and taking ownership and accountability for your actions.

**Resilience-** By demonstrating the ability to recover from setbacks, adapt to change, and persist in the face of adversity.

## A MESSAGE FROM THE COLLEGE PRINCIPAL

*To our New Students, Families and Carers,*

Welcome to Mount Erin College. You are about to enter a very exciting and challenging stage of your education and begin a pathway that sets the building blocks for your future. Our role as a school is to provide a safe learning environment where every student has the opportunity to grow. Opportunities for success will be provided through a challenging and innovative curriculum and an extensive co-curricular program. We pride ourselves in being able to cater to your individual needs and provide support for your learning.

As a learner at MEC, we will support you to take responsibility for your actions, behave in an adult way and most importantly apply yourself to all of the learning opportunities you will be presented with. I believe that students do not just learn in the classroom so please make the most of the extra-curricular programs that are offered to you. These include compulsory House sporting carnivals (swimming, athletics and cross country), inter-house challenges, interschool sport, camps, excursions, music ensembles, and student leadership opportunities.

As a College we are actively encouraging the pursuit and celebration of excellence. We want to develop a learning environment that values diversity and encourages all members of the community to participate.

We take pride in our College and part of this is pride in wearing our school uniform and how we represent ourselves in the community.

We wish you every success over your Mount Erin College journey.



**Jenni Hodgins**  
Principal

## COLLEGE COMMUNICATIONS

At Mount Erin College, we are committed to open communication and want to work with parents and families to provide the best learning environments and opportunities for all students. We have established a range of communication methods to meet these needs. The House Structure provides a streamlined approach for parents to be able to contact relevant staff directly. All matters relating to students (except finance) can be directed straight to the relevant House Office to gain support from the House Leadership team by calling 5971 6000.

Our Administration Office is open from 8am – 4pm Monday to Friday during the school term and can assist with general enquiries. Please note that the College office may be closed on certain student free days and is closed during school holidays.

### Contact Information

In order to receive the most up to date information, please ensure you provide the College with the most current contact information including phone numbers, address and email details. The Administration Office can assist with this.

### Compass

The College uses Compass as our main communication tool between parents and teachers and students and teachers. Compass allows you to view your child's attendance, learning tasks, assessment tasks, reports and a range of other important information and news. All event / excursion information is communicated through Compass, which includes parent consent.

You will be provided with your username and password in the lead up to your child starting Year 7. If you currently have a student at MEC, your username and password will remain the same. Please contact the College for support with Compass.

More information can be found at: <https://mounterin.vic.edu.au/year-7-information-centre/compass/>

### Website / Facebook/ Instagram

The college website has information about the college. It also has links to the booklist, uniform shop and other important resources. <https://mounterin.vic.edu.au/>

Through the MEC Facebook page, followers can view photos and updates highlighting college events and achievements. <https://www.facebook.com/MountErinCollege/>

The MEC Instagram page keeps followers informed with updates and photos of events and activities across the college. <https://www.instagram.com/mounterincollegeofficial>

### Email

The general College email address ([mount.erin.sc@education.vic.gov.au](mailto:mount.erin.sc@education.vic.gov.au)) can be used for general enquiries during the school terms. In addition, our principal Ms. Jenni Hodgins can be emailed directly using [principal@mounterin.vic.edu.au](mailto:principal@mounterin.vic.edu.au).

## 2026 KEY STAFF

College Principal	Ms Jenni Hodgins
Assistant Principal	Ms Nicole Pallot
Assistant Principal	Mrs Siaan Le Fevre
Transition	Mrs Amanda Muxworthy
Business Manager	Ms Erin Gray
DEC Leader	Mr. Alex Robinson
Inclusion Leader	Mrs Kristianna Davis

## 2026 DAILY TIMETABLE

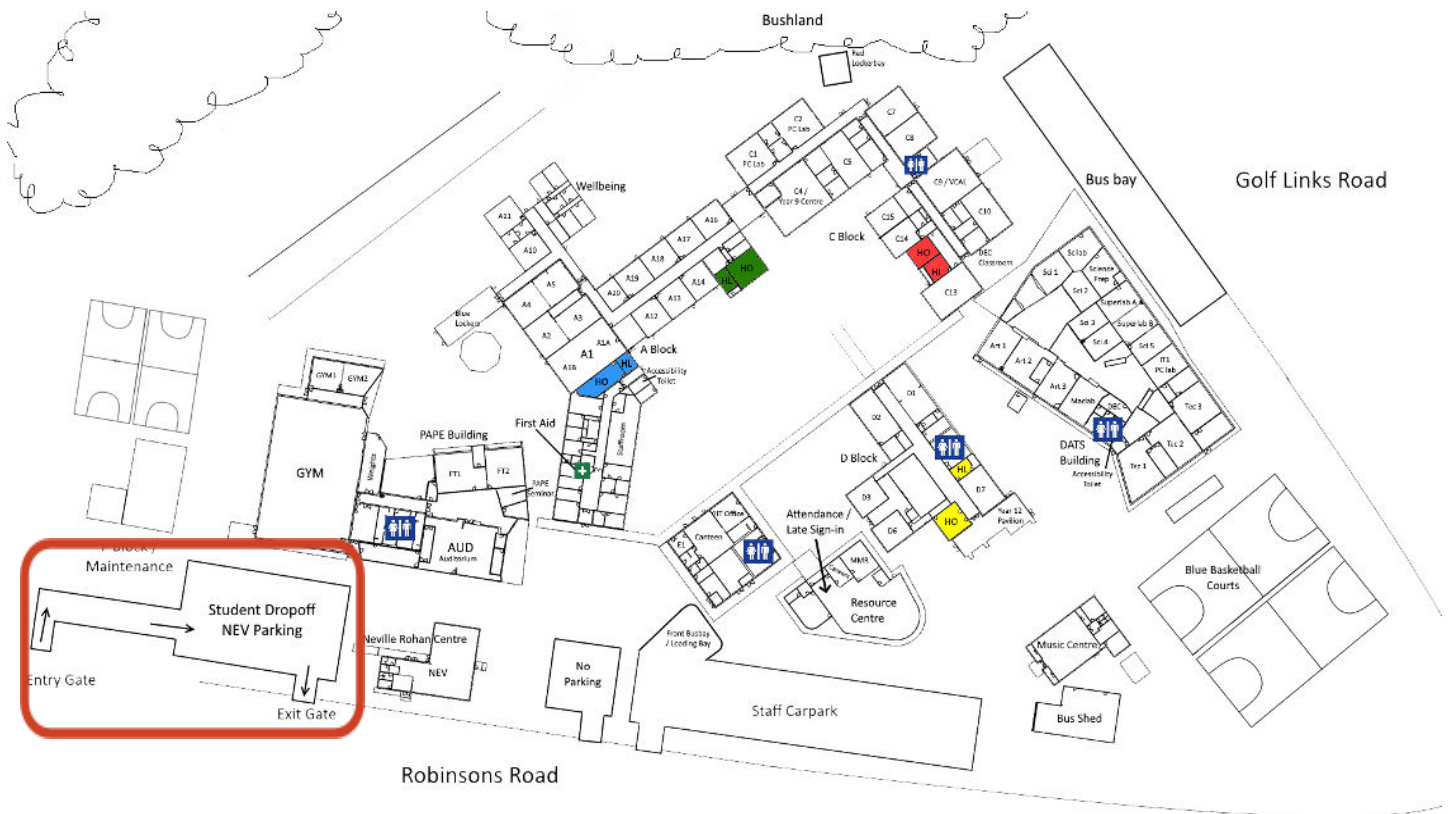
Warning Bell 8.20am	
<b>Period 1</b>	8.30am – 9.30am
<b>Period 2</b>	9.30am – 10.30am
<b>Recess</b>	10.30am – 10.50am
Warning Bell 10.50am	
<b>Period 3</b>	10.55am – 11.55am
<b>Period 4</b>	11.55am – 12.55pm
<b>Lunch</b>	12.55pm – 1.35 pm
Warning Bell 1.35pm	
<b>Period 5</b>	1.40pm – 2.40pm

Students need to use the warning bells to prepare themselves for their next classes. All resources for their next classes should be taken at this stage to avoid having to return to their lockers between classes.

Students start the day straight into Period 1 and are dismissed for the day directly after Period 5.

Every final day of term finishes at 2.30pm and the periods are adjusted accordingly.

## MAP OF THE COLLEGE



Out of bound areas which include:

- Teacher offices, car parks, construction areas, bushland
- Between any building and the street fence.

## IMPORTANT DATES

Please regularly refer to the College website and Compass for updates of important dates as although these dates were correct at the date of publishing there may be some changes. Student free days for staff professional learning days and parent teacher interviews will be published once confirmed.

### 2025

Wednesday 8 <sup>th</sup> October	Parent Information Session
Friday 24 <sup>th</sup> October	Enrichment Program Applications Close
Tuesday 18 <sup>th</sup> November	Pre-Orientation Day 1 (selected students only)
Tuesday 25 <sup>th</sup> November	'New Connections' Early Orientation (selected students only)
Tuesday 2 <sup>nd</sup> December	Pre-Orientation Day 2 (selected students only)
Friday 5 <sup>th</sup> December	Year 7 Enrolment Information Form to be returned to MEC
Tuesday 9 <sup>th</sup> December	Year 7 Statewide Orientation Day
Wednesday 11 <sup>th</sup> December	Campion Booklist due by this date for FREE Home Delivery

### 2026

Wednesday 28 <sup>th</sup> January	Term 1 begins for Year 7 and Year 12 students
Thursday 29 <sup>th</sup> January	Term 1 begins for Years 8 to 11 students
Thursday 26 <sup>th</sup> February	School Photos
Friday 15 <sup>th</sup> March	School Photos (Catch Up Day)
Monday 9 <sup>th</sup> March	Labour Day Public Holiday
Wednesday 11 <sup>th</sup> March	NAPLAN begins
Monday 20 <sup>th</sup> April	Term 2 begins
Monday 8 <sup>th</sup> June	King's Birthday Public Holiday
Friday 26 <sup>th</sup> June	Term 2 concludes – 2:30pm finish
Monday 13 <sup>th</sup> July	Term 3 begins
Friday 18 <sup>th</sup> September	Term 3 concludes- 2.30pm finish
Monday 5 <sup>th</sup> October	Term 4 begins
Tuesday 3 <sup>rd</sup> November	Melbourne Cup Public Holiday
Friday 18 <sup>th</sup> December	Term 4 concludes



## THE HOUSE STRUCTURE

While in a traditional school structure (especially Primary Schools), house colours have been allocated to students for the purpose of sporting activities, however at Mount Erin the House structure is a very special school-wide program that is designed to integrate all aspects of a student's school life.

Students and staff in the College are distributed between the four Houses- Blue, Green, Red and Yellow. These are vertical groups where students progress through the year levels whilst remaining in their assigned house for the duration of their time at MEC. The House structure promotes connectedness to school and provides continuity from year to year.

Each House is led by a dedicated team of teachers, comprising a House Leader and an Assistant House Leader. This team is the first point of contact for parents regarding student matters such as uniform, academic progress, wellbeing, and pathways planning.

*Please note: Attendance is managed separately by our Attendance Officer. All attendance-related enquiries should be directed to them.*

During Orientation, students are allocated to a House and introduced to their House Leaders, who will support them throughout their entire secondary school journey. Where possible, students will be placed in the same House as their siblings.

The House Leadership Team is committed to getting to know every student and their families. They are available to discuss any concerns or questions and will work closely with parents to ensure each student is fully supported and able to thrive.

## SCHOOL ATTENDANCE

MEC has an attendance expectation of 95% and believes strongly that if a student is not present their learning is severely impacted. All student absences require *written confirmation* from their parent/carer which can be a handwritten letter or email and provided before, on or following the date/s of absence. If your child is absent, please contact the Attendance Officer at the College on (03) 5971 6000

If your child is absent and has not been accounted for via parent communication, a text message will be sent from the College at 9.30am to inform of this absence.

If your child needs to leave school early, please send them with a note in the morning to give to the Attendance Officer so they can be signed out in order to meet you at the required time of collection. Notes need to be signed by a parent / legal guardian.

Should something arise on the day requiring your child to leave early please ring the College and we will arrange for your student to meet you. Please DO NOT contact students directly on their mobile phone as this is in breach of the student mobile device policy.

More information can be found at: <https://mounterin.vic.edu.au/parent-information/attendance/>

## TEACHING AND LEARNING

### Victorian Curriculum 2.0

At Mount Erin College, the Year 7 to 10 curriculum is designed to engage and motivate students. Our school has developed a curriculum that is aligned with student interests and needs while also linking with the Victorian Curriculum 2.0, which is implemented in all Victorian schools.

For more information on The Victorian Curriculum 2.0 visit <https://f10.vcaa.vic.edu.au/>

Over a fortnight, students complete 50 periods distributed over a range of core and specialist subjects as indicated in the table below. Core subjects run for the entire year, whereas specialist subjects run for one semester in length.

Year 7		Year 8	
<b>Core Subjects</b>	<b>Periods</b>	<b>Core Subjects</b>	<b>Periods</b>
English	8	English	8
Maths	8	Maths	8
Science	5	Science	5
Humanities	5	Humanities	5
Physical Education	5	Physical Education	5
Personal Development	2	Personal Development	2
<b>Specialist Subjects (semester)</b>	<b>Periods</b>	<b>Specialist Subjects (semester)</b>	<b>Periods</b>
Art	4	Art	4
Digitech	4	Digital Art	4
Drama	4	Digitech	4
Food Technology	4	Drama	4
Health	4	Health	4
Music	4	Materials Technology	4
Indonesian	5	Indonesian OR Auslan (FULL YEAR)	5
Auslan	5		

### Personal Development

A large part of relationship building is established and developed through the College's pastoral care program called Personal Development. Students will be involved in activities relating to the development of pro-social skills, careers and pathways, understandings and personal wellbeing.

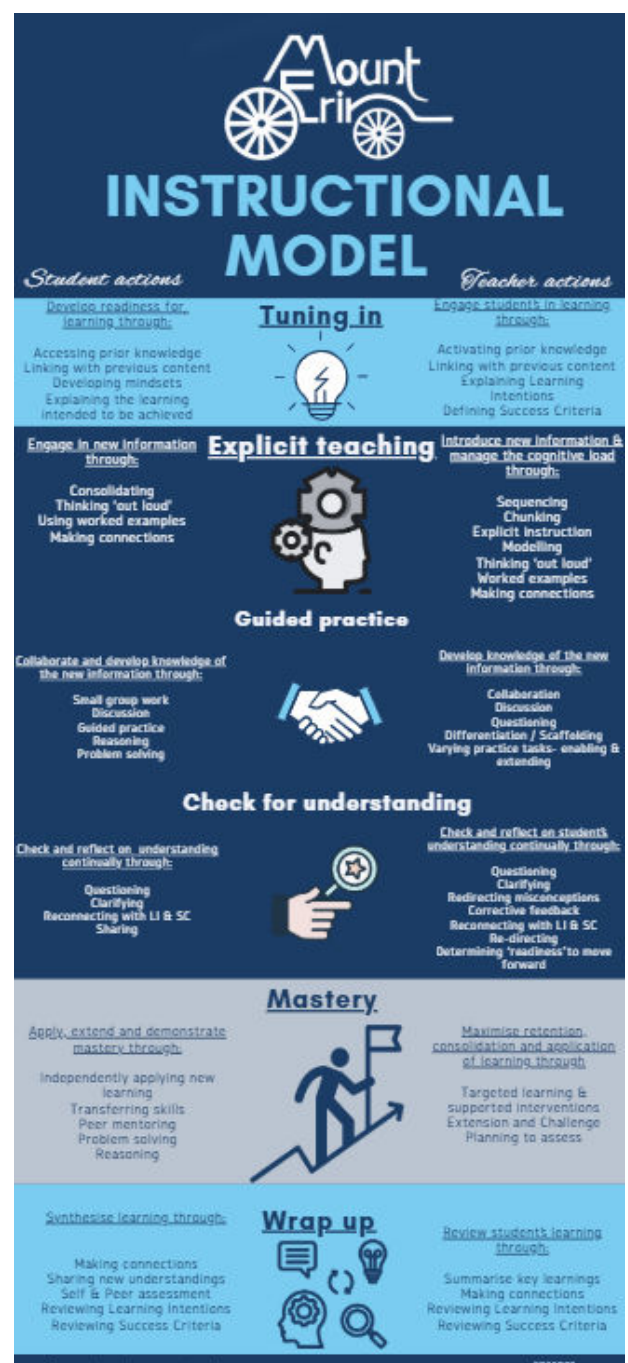
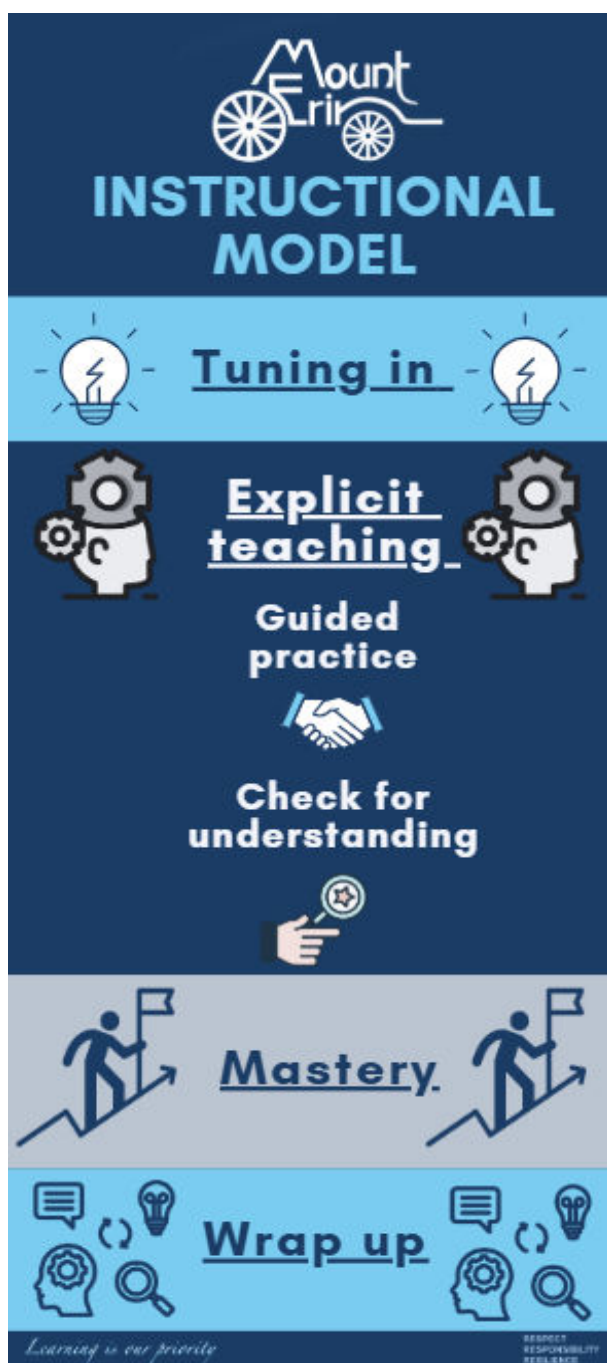
### Sports Programs

In addition to the standard Physical Education and Health curriculum, students are encouraged to participate in the College sports programs including College sporting carnivals (athletics and swimming), inter-house sports and inter-school sports.



# MOUNT ERIN COLLEGE INSTRUCTIONAL MODEL

An Instructional Model is a framework that guides the pedagogical strategies used by teachers to enhance student learning. Our instructional model promotes consistency, collaboration and reflection across the school. It ensures that regardless of the classroom students enter, the same high quality teaching practices will occur.



## Additional Learning Supports

### Disability Inclusion Initiative

At MEC we understand that students learn and access the curriculum in different ways, hence we cater to all student needs and disabilities and will work with parents and carers to create a positive and safe learning environment in accordance with the *Department of Education's Disability Inclusion Guidelines* and with the Regional SSS (Student Support Service Officers). Our Inclusion Team prides itself on providing a strong tiered-support model with a focus on student learning growth and future independence.

During the 2026 school year all year 7 students that have been previously funded under the Program for Students with Disabilities (PSD) will take part in the Disability Inclusion Profile (DIP) process to assess their eligibility for continued Tier 3 funding under Disability Inclusion. This process will involve a period of evidence gathering and a DIP meeting run by Department of Education facilitators. Parents and carers will be asked to provide any current medical reports and assessments to assist with this process.

We work closely with the Primary Schools during the transition phase to ensure we are fully informed of the needs of individual students, however please contact Mr Stephen Cavell, Inclusion Coordinator at MEC to make a time to discuss the individual needs for your child.

### Deaf Education Centre (DEC)

MEC is proud to be the only Deaf Education Centre (DEC) for secondary students on the Mornington Peninsula and we guide and support students who are deaf and hard of hearing (DHH) to achieve their educational goals, preparing them for further studies or the general workforce. The benefits for DHH students attending the Mount Erin DEC include:

- Extensive transition assistance from Grade 6 to Year 7, plus Deaf awareness instruction for all Year 7 students.
- Access to mainstream classes that have appropriate resources and staff to cater for individual needs.
- Inclusion in and identification with the college.
- Access to specialist staff including the guidance officer, welfare officer, speech pathologist and educational psychologist.
- Individualized student support programs to monitor progress and learning goals.
- Support for parents

Mr. Alex Robinson is our Teacher of the Deaf and DEC Coordinator and can be contacted directly at the College to discuss student needs.

*More information can be found at:*

<https://mounterin.vic.edu.au/year-7-information-centre/deaf-education-centre/>

## Homework/Study/Revision Information

### Homework, Study and Revision

Homework, Study and Revision are integral parts of Mount Erin College's approach to helping all students maximise their achievements and to develop a life-long habit of independent learning.

It is expected that all students will engage in homework, study and revision throughout their units of work.

At Mount Erin College we have high expectations for our students to complete subject specific work. The process to ensure all subject specific work is completed can be found in the [MEC Process for Incomplete Work](#).

Please see Mount Erin College's [Homework Policy](#) for more information.

Homework	Study	Revision
Homework will usually consist of unfinished tasks assigned to students by teachers meant to be carried out during non-class time. In addition, homework tasks can be small tasks or research activities to prepare students for upcoming lessons. Completing unfinished classwork should be the first priority for students to ensure they remain up to date.	Study is the process of regularly and promptly consolidating learning that has occurred in the classroom; usually completed outside of class time but may also be modelled by a teacher or students in the class. Study will usually involve summarising information, chunking information into manageable concepts, using multiple exposures and then retrieving information over time.	Revision ensures knowledge and skills are regularly retained and refreshed over the long term. This means retrieving information or practising skills that are not the current focus of class time or study. Revision is essential if students are to do well in examinations and continue to improve through the process of life-long learning. Study is the action of consolidating new information or processes whereas revision is the action of reviewing and revisiting previously studied information or processes.



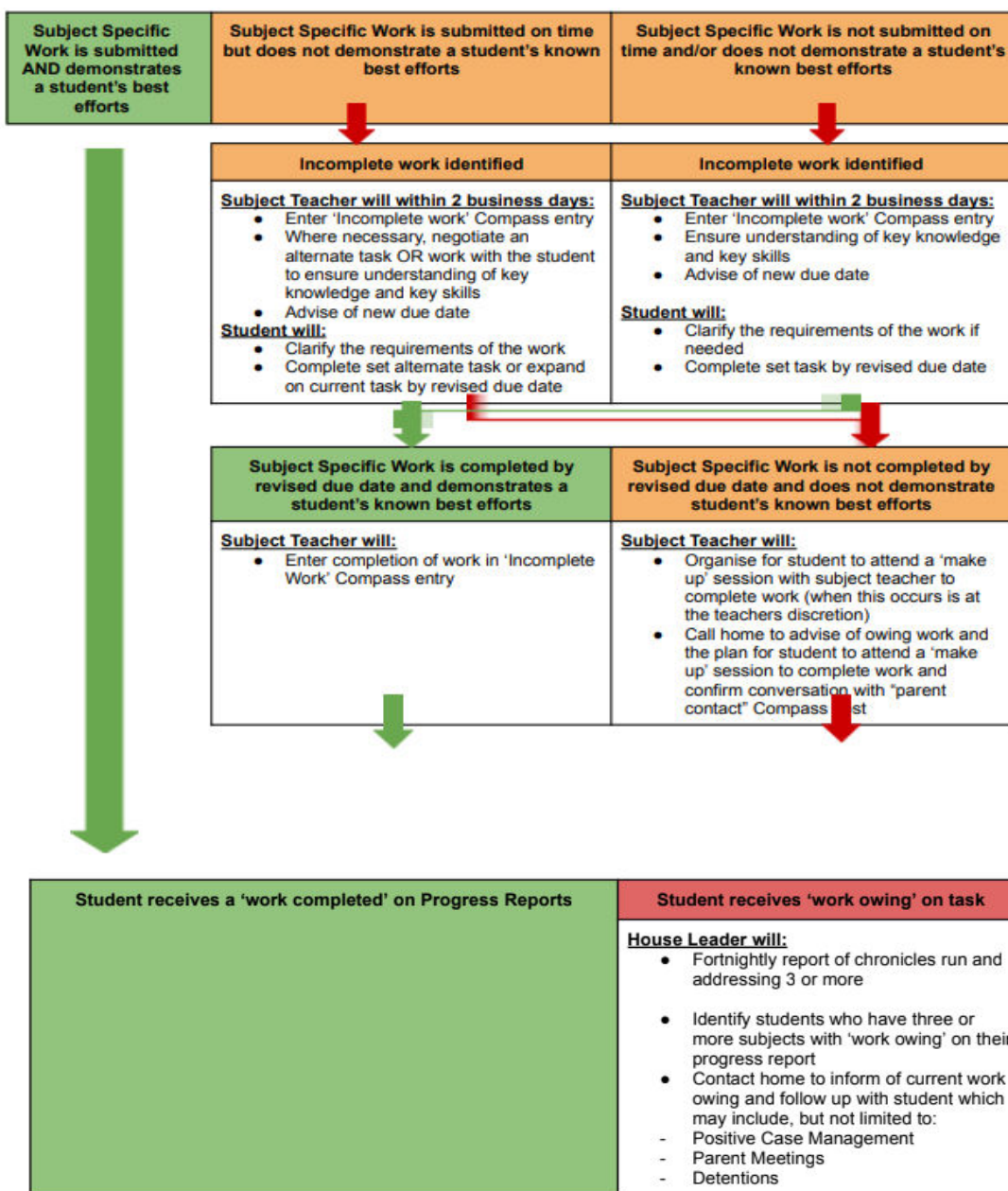
## MOUNT ERIN COLLEGE PROCESS FOR 7-10 INCOMPLETE WORK

### Completion of Subject Specific Work

At Mount Erin College, *learning is our priority*, where we aim for growth of student outcomes. This means we have a growth mindset, where the emphasis is on learning progression rather than achieving specific academic levels. As part of their growth, students are expected to show evidence of the Victorian Curriculum and/or VCE key knowledge and key skills. Students can illustrate this in a number of ways, including submission of Subject Specific Work. This Subject Specific Work and the due dates are determined by the subject teacher.

For completion of Subject Specific Work, students should submit work to the best of their ability by the due date. If this work is not completed by the due date and according to the teacher's judgement, to the student's best ability, the MEC process for incomplete work will be followed, as outlined below.

### Subject Specific Work is due to be submitted



## ENRICHMENT PROGRAMS

At Mount Erin College, we have expanded and improved our programs that are dedicated to students who have a specific area of interest or talent. We want to support individual student's passions and provide opportunities to encourage continued development and extension. The programs have been specifically designed to ensure guidance from industry experts, connections with the community and engagement of the highest level.

Any student from Year 7 - 10 can apply for an Enrichment Program of their choice and students may vary their choice of Enrichment Program over the years. In 2026, we proudly offer the following Enrichment Programs to our Year 7 students:

- Athlete Development
- Basketball
- Media
- Performing Arts
- STEM

Specific details for each Enrichment Program can be found on the College website as well as information about how to apply. Applications close on **Friday 24<sup>th</sup> October 2025**. Following this, students will be notified of acceptance into the relevant Enrichment Program. Further information can be gained by contacting Mrs. Siaan Le Fevre (Assistant Principal- *Teaching and Learning*) at the College.

More information can be found at: <https://mounterin.vic.edu.au/enrichment/>

## **EXTRA-CURRICULAR OPPORTUNITIES**

In addition to the normal timetabled programs, Mount Erin College offers a wide range of extra-curricular activities. These activities are important as they give students extra opportunities to extend their network of friends, develop new and favourite specific interests and skills and demonstrate and practice their leadership abilities.

Participation in extra-curricular activities also provides the opportunities for students to become more connected to the College and other students, and to increase their sense of belonging to our college community.

### **Sport**

Students are encouraged to strive for excellence and personal satisfaction through participation in inter-school and inter-house sporting competitions. The College competes against other Secondary Schools to qualify to compete in Northern Peninsula Division School Sport Victoria Sports Carnivals.

### **Music**

All students are encouraged to learn music as an extracurricular activity. Tuition is available in a range of instruments including flute, clarinet, saxophone, trumpet, trombone, percussion and drum kit, guitar and bass, violin, double bass, piano and singing. Students who learn an instrument are expected to practice daily and are invited to participate in the college music ensembles and bands.

### **Performing Arts**

MEC proudly presents a range of productions for the annual showcase and provides a range of opportunities for students of all ages to be involved. All roles, including performers, dancers, musicians and backstage crew are open for year 7 students to apply.

### **Student Leadership**

MEC offers an extensive student leadership program with positions available for students in Year 7 to 12 and includes leadership of Arts, Community, Learning, Sports, House and College. Year 7 students are eligible to apply for a Junior House Assistant Captain position.

### **Additional Activities**

The College offers a number of lunchtime activities and groups, often dependent on student interest. Additional activities that students may be offered include Wellbeing Programs, Breakfast Club, Peer Support Debating, MUNA (Model United Nations Assembly), Auslan catchups, Art Club and Koorie Club.



## STUDENT ENGAGEMENT

At Mount Erin, we support students' learning, behaviour, and wellbeing in different ways depending on their needs. We begin by putting strong foundations in place for all students. This gives most students the skills, knowledge, and support they need to do well.

For some students, we know extra help is needed. In these cases, we provide more targeted and specialised support through a tiered approach, to meet each student's individual needs.

Further information regarding our Student Engagement practices can be found in the *Student Engagement Handbook*.

## WELLBEING “Helping *You Help Yourself*”

Located in the Wellbeing Centre, the Wellbeing Team contributes to the broader College goals of student engagement. The Wellbeing Team offers a wide range of services and programs designed to meet the diverse needs of our students. This includes:

- 1:1 Intervention
- Group programs – Breakfast Club, Lunchtime Activities
- Health education and promotion activities
- Early intervention programs
- Engagement in school wide initiatives that support our students' social emotional development and wellbeing
- Community and Student Re-Engagement
- Mental Health Practitioner

The Wellbeing Team highly values community-based support services and continually seeks new and exciting opportunities to engage students and families in lifelong learning. This includes collaboration and consultations with:

- Frankston City Council Youth Services
- The regional SSSO (Student Support Services Officers)
- Headspace
- ELMHS (Early in Life Mental Health Service)

To engage in the wellbeing services, please contact your House Leader to arrange a referral to the Wellbeing Team.

## 1:1 LAPTOP PROGRAM

To create a technologically rich learning environment that actively prepares students as global citizens, it is compulsory for all MEC students to “Bring Your Own Device”. The College will grant access to the school’s wireless network, internet, Office 365 and printing. Any use of the wireless network entails personal responsibility as well as compliance with the MEC Acceptable Use Policies.

More information can be found at: <https://mounterin.vic.edu.au/11-laptop-program/>

## TEXTBOOKS AND RESOURCES

As a part of our commitment to providing the best possible educational outcomes for our students the college has a compulsory booklist. Students will be required to purchase all texts and materials for their subjects from the Campion booklist which is available via the College website.

More information can be found at: <https://mounterin.vic.edu.au/parent-information/booklist/>

## UNIFORM

The aim is for students to represent Mount Erin College in an appearance that is clean, neat and tidy, thus wearing our Uniform with pride. The complete uniform must be worn to and from school without any additional non-uniform jackets or hats. Beleza School Uniforms are the official stockists of the Mount Erin College uniforms which can be purchased from one of their local stores (Somerville or Frankston) or online <https://store.beleza.com.au/201-mount-erin>.

Detailed information regarding uniform requirements, policy and purchase details is outlined on the College website however the following dot points are important to note.

- Additional layers of clothing may be worn underneath the uniform for added warmth, provided these undergarments are of discrete colours matching the uniform.
- Shoulder length or longer hair is recommended to be tied back to help restrict the spread of lice and for student safety.
- Jewellery, nails, hair accessories and similar items that interfere with students’ ability to engage with school activities safely and fully are not permitted.
- School uniform hats are recommended to be worn throughout periods of high UV radiation. School uniform hats may also be worn outside of this time period, by parent or student choice. Hats are not to be worn inside.
- Students are permitted to wear sunglasses during outdoor activities.
- Hoodies are not permitted to be worn at any time to ensure the health and safety of students and the identification of students in the yard.

If students choose to participate in Non-Uniform Fundraiser days they are expected to wear smart casual clothing, closed in shoes, no offensive logos and clothing will need to be sun smart (i.e. tops need to cover the shoulders, no bare midriffs, etc.).

More information can be found at: <https://mounterin.vic.edu.au/parent-information/uniform/>

## FINANCE

### Financial assistance

Mount Erin College understands that some families may experience financial difficulty. The Camps, Sports and Excursions Fund (CSEF) payment of \$400.00 is available to all families with a Healthcare Card or Pension card. For a confidential discussion about support for textbooks, uniforms or other resources, or if you would like to discuss alternative payment contribution arrangements, please contact the College on (03) 5971 6000 to make an appointment with Erin Gray, Business Manager.

### Paying Money

Payment options include cash, EFTPOS, debit/credit card and BPAY, either in person or by phone. Our Compass Portal is also available to pay in full or by 5 or 10 instalments, dates as set out on the Compass Portal. If you would like to commence a payment plan, please contact the Finance Office which can be in the form of debit/credit card deductions or Centrepay.

More information can be found at: <https://mounterin.vic.edu.au/parent-information/fees-charges/>

## EXCURSIONS AND CAMPS

### Excursions

Students are given many opportunities to participate in a range of excursions as part of their learning. Most excursions are compulsory and must be attended as part of the student's academic program. There is a \$30 Whole School Events charge payable with the Parent Payments - Curriculum Contributions which covers the costs of students attending the compulsory annual Athletics and Swimming Carnivals. Parents have to provide online consent through Compass for their child to attend these events. Other excursions may or may not incur a charge to cover transport or admission costs, however all excursions require parental consent at least TWO business days prior to the event. MEC WILL NOT permit any student to attend an off-site event if parental consent is not received by the due date.

### Year 7 Camp

As part of the Year 7 Program in 2026, students will be involved in a Year 7 camp. **It is strongly recommended that all students attend this camp.** The purpose of this camp is to help develop students' relationships with staff and each other to maximize their learning potential. They will have the opportunity to participate in a wide range of activities. More information will be available soon.

## GENERAL RESOURCES AND INFORMATION

### Accident Insurance

The Department of Education and Early Childhood Development does not provide accident insurance or ambulance cover for students. Parents and carers of students, who do not have student accident insurance/ ambulance cover, are responsible for paying the cost of medical treatment including the cost of ambulance transport and any other transport costs.

The Department of Education and Early Childhood Development cannot advise parents/guardians on whether to purchase a student accident policy/ambulance cover or which policy to purchase. It is recommended that parents/guardians seek assistance in the matter from an insurance broker or find a suitable personal accident insurer.

### Bags

The College Board has selected a high quality, ergonomically designed backpack which is highly recommended and can be purchased from Beleza. Bags are NOT to be taken into any classrooms and should be secured in student lockers.

### Bicycles

Students who choose to ride to school on bicycles or scooters are not permitted to ride on the College grounds and are expected to follow road laws (including the wearing of helmets). Bikes and scooters can be stored in the bike compound near the music center and must be independently locked for security.

### Bus

MEC is well serviced by public transport but also provides a school bus service to support our families. Categories of eligibility determine whether a student is granted a seat on a bus and whether or not a fee is applicable. Students wishing to access a seat on a bus must complete an application form and parents/guardians must agree to the conditions of travel including, if applicable, the payment of a fare.

More information can be found at: <https://mounterin.vic.edu.au/parent-information/bus/>

### First Aid

If students are unwell, they should report to their class teacher, House Leader or the front office. The College will contact parents immediately if students are too unwell to attend class. It is essential that the College has all emergency contact details and is informed immediately if there is a change to this information. Students are not permitted to phone parents directly without permission from a staff member.

### Library / Resource Centre

The Resource Centre is a welcoming environment where students can explore, learn, and create. Our collection includes a variety of the latest fiction, non-fiction, and graphic novels and is complemented by our online library, Wheelers Eplatform. The Resource Centre is open to classes and study groups

throughout the school day. It opens socially on Tuesdays and Thursdays, as well as during recess and lunch, where students can enjoy chess games and creative activities.

We also have started a blossoming partnership with Frankston Library, giving students more access to additional resources, study spaces, and opportunities, extending their learning beyond the school's collection.

## **Lockers**

Each year students will be allocated a locker. The lockers remain the property of the College and as such must be used with respect and kept clean, neat and tidy. Upon payment of the charge, students are supplied with a combination lock. It is essential that students do not tell anyone their combination or write it in an obvious place. Any problems with lockers should be reported to the House Leadership Team. Student bags and belongings should remain in their locker for the day. Students need to be prepared for each class and are only permitted to go to their lockers before school, during recess and lunchtime.

## **Lost Property**

- If students find something they are asked to hand it in to their House Leadership Team or General Office.
- To assist in finding lost property students and parents should ensure that all clothing and possessions are labelled with the student's name. Valuables should not be brought to school. Private property brought to school is not insured and the College is not responsible for any loss.
- If students have lost something they should report this to their House Leadership Team or General Office. Items of lost clothing will be stored in the First Aid area. Unclaimed non-uniform clothing is given to charity at the end of each term.

## **Mobile Phones**

In accordance with the Education and Training Reform Act 2006 (Vic), Mount Erin College understands that students may bring a personal mobile phone to school, particularly if they are travelling independently to and from school. At MEC:

- Students who choose to bring mobile phones and personal electronic devices to school must have them switched off and securely stored in their locker during school hours. MEC will not be held liable for any damage, loss, or theft of students' phones or personal electronic devices.
- Exceptions to this policy may be applied if certain conditions are met.
- When emergencies occur, parents or carers should reach their child by calling the relevant House Office on 5971 6000 and follow the prompts.

## **Out of Class**

Students should not be out of class unnecessarily. If a student needs to leave class for any reason, they must ask the teacher's permission and carry an out of class pass from their teacher.

## **Toilets**

The College toilets are freely available for students to access at all times and access is supervised by a yard duty teacher.